

NEW WORK AWARDED

Allied would like to thank all of the contractors below for awarding the following works:

MORGAN
Ashurst

ST. THOMAS'S
PRIMARY SCHOOL

Start Date: October 2008

Project Description:
Traditionally built primary school.

Scaffold Works:
External independent scaffold, roof & floor edge protection with various internal scaffolds.

WILLMOTT DIXON W

MAINE ROAD PRIMARY
SCHOOL

Start Date: October 2008

Project Description:
Traditionally built primary school.

Scaffold Works:
External independent scaffold, roof & floor edge protection with various internal scaffolds.

LAING O'ROURKE

EDENFIELD MEDIUM
SECURE UNIT

Start Date: October 2008

Project Description:
Traditionally built secure medical unit.

Scaffold Works:
External independent scaffold, roof & floor edge protection with various internal scaffolds.

wates

STOCKPORT
COLLEGE

Start Date: October 2008

Project Description:
Construction of a traditionally built school.

Scaffold Works:
Various edge protection handrails and complex design scaffolds.

Harlow & Milner Ltd.
www.harlow-milner.co.uk

WESTGATE

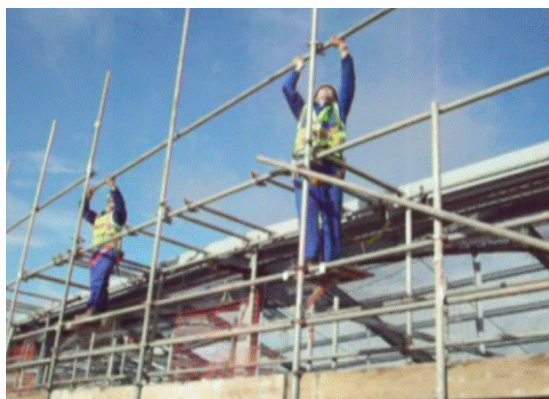
Start Date: November 2008

Project Description:
Construction of office and accommodation brick built and render finished.

Scaffold Works:
External & internal scaffolds

The Step-Up Device - Read with Guidance Overleaf

The Step-Up Device is a safe system of work designed to provide the scaffolder with fall protection provided by the ledger of the next lift whilst installing the handrail for the next lift. This means that the scaffolder can erect and dismantle the scaffold safely while being protected by a guardrail which itself becomes part of the finished scaffold structure. The Step-Up Device is usually used in pairs with two employees working together, particularly on longer facades. This allows us to meet the new collective fall protection methods described overleaf.



Please use the cut-off slip below to let us know your preferred system of work to avoiding work at height as recommended by the HSE.



Tube & Fitting Advanced Guardrail

Collapsible Aluminium Podium

Pivot Type Advanced Guardrail

Telescopic Advanced Guardrail

Step-Up Device

For clarification of types please see SG4:05 Appendix A.

PLEASE PASS CUT - OFF SLIP TO YOUR SUPERVISOR ASAP

ISSUE 11

Pictures of Complex Design Scaffolds as Erected at Stockport College



TRAINING

1. 2 Day Site Supervisor Safety Training Scheme for Lead-Hands - December 2008
2. We are currently reviewing the candidates for Basic Part 1 & Basic Part 2 training, if you think you should be put forward please raise the issue at appraisal or with your Supervisor.

Extract from SG4:05 Appendix A Interim Guidance on Collective Fall Prevention Systems

"SG4:05 Appendix A Interim Guidance on Collective Fall Prevention Systems in Scaffolding" has been created to provide the industry with information on new and developing technology available to ensure that all fall prevention methods are considered before solely relying on personal fall arrest methods e.g. Harness & Lanyard.

This is becoming ever more important to keep our industry safe and has led to the HSE stating that aspects of "Traversing" or "Tunnelling" contained within NASC Guidance are **no longer acceptable** and that their withdrawal from industry guidance will be requested at the next update.

The Hierarchy of Controls says that where it is reasonably practicable precautions must be taken to prevent a fall. In order the Scaffolder must consider, **1).** Is it possible to avoid working at height? **2).** Can work equipment be used where working at height cannot be avoided? (Advanced Guardrail or Step-Up) **3).** Can work equipment or other measure mitigate the distance and consequence of a fall? **4).** Only once all of the above questions have been reviewed can an operative continue to work with the sole reliance of Personal Fall Arrest equipment e.g. Harness & Lanyard.

INCIDENT STATISTICS

Due to the number of incidents covered in previous Newsletter our Directors have been focusing on the root causes of these incidents in their HSEQ Audits and have put measures in place to prevent reoccurrences.

This has had a positive affect on our incident statistics. Since measures have been put in place we have had no lost time incidents and 2 incidents involving minor cuts.

Please carry on the good work, and remember to always report any accidents or incidents including any near misses to your supervisor.

REMEMBER THAT NO JOB IS SO IMPORTANT THAT IT CAN'T BE DONE SAFELY

ASL provide Television Stand at Oldham Athletics' Boundary Park



ASL have helped support the club by providing a Television Stand at Boundary Park, home to Oldham Athletic Football Club & Oldham Roughyeds Rugby League Football Club.

The stand will be used for the 2008—2009 seasons and will be used by the BBC Sports & Sky Sports for radio and television footage.



If any member of staff, operative, or client would like to make any comments, or suggestions please write it below, cut off the slip and either give it to a supervisor or take it to one of the offices listed below.